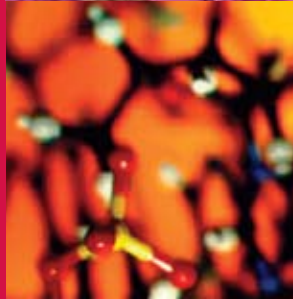
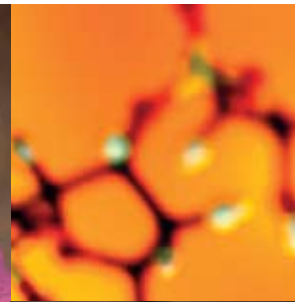


Our Values



OUR COMMITMENT TO THE COMMUNITIES we serve is formidable and unwavering. Our work does not merely impart knowledge—it creates it and fundamentally alters what is possible for people, communities, and institutions everywhere. The hallmarks of our work are leading-edge research and expanding educational opportunities. Our commitments also include stimulating economic prosperity and anticipating and addressing societal needs. We provide extraordinary learning opportunities for the whole student inside and outside the classroom and in the community. We conduct ourselves on behalf of the institution according to the following fundamental values:

We are committed to:

EXCELLENCE—in the standards we set, the results we produce, the relationships we are in, and the dedicated service we provide.

COLLABORATING AS ONE UNIVERSITY—our aspirations demand we remove internal boundaries—we must share information, promote teamwork, and think creatively to make this happen.

ACTING WITH INTEGRITY AND PERSONAL ACCOUNTABILITY—we accept responsibility for our actions, we keep our word, we focus on solutions rather than fault and blame, and we take initiative to make things happen.

OPENNESS AND TRUST—our communication is direct and honest, we promote authenticity and transparency in our relationships and activities, we're open to feedback and coaching, and we give feedback with candor and respect.

DIVERSITY IN PEOPLE AND IDEAS—the health of our environment demands that we respect each other, that we are inclusive, and that we profoundly value who each of us is as a whole person and what each of us uniquely contributes.

CHANGE AND INNOVATION—these principles are our heritage and our future— we're curious, we're creative, and we embrace positive, constructive conflict.

SIMPLICITY IN OUR WORK—in the administration and management of our enterprise we are responsive, ethical, and transparent and we strive to make the functioning of this complex institution simple and efficient.

EMPATHY AND COMPASSION—this is at the heart of what we do. We are caring, respectful, and encouraging to each of our customers and to each other. Because we are sensitive to individual needs, we actively listen and seek ways to improve the OSU Medical Center experience.

LEADERSHIP—we live in alignment with our values and are thoughtful about how we influence others as we develop and deliver personalized health care.

■ Values in red represent the long-standing OSUMC values

■ Values in black reflect those we are adding as part of the University

■ Value in blue highlights a value that we have added at OSU Medical Center