

Open MRI

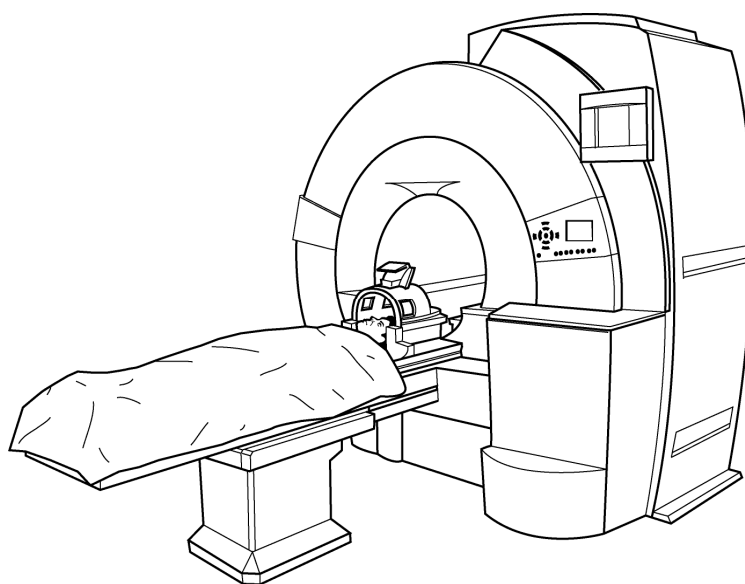
What is an MRI?

Magnetic Resonance Imaging (MRI) is a safe, painless way for your doctor to look into your body. The pictures taken during the test look at the soft tissue and bones in your body. They provide information that can help your doctor diagnose the problem that you are having. The test uses radio waves and a magnetic field to take pictures of the soft tissues and bones.

How is the open MRI done?

You will lie on a table that will move into the opening of the scanner. The scanner has a tunnel opening that is about 27 inches across and 18 inches high. Depending on which part of your body is being checked, you may lie with your head or feet closest to the magnet.

The technologist will not stay with you in the room. You will be able to hear and see the staff and they will check on you through an intercom and window. If you become uncomfortable at any time, tell the technologist. Staff will be right there to help you.



More on next page →

Learn more about your health care.

Please stay as quiet and still as you can for the test. You will hear a sound like a drum beat as the pictures are being taken. You will be given ear plugs to wear.

When the test is done, the technologist will take you to change into your clothes and gather your belongings. If you are a patient in the hospital, you will be taken to your room.

A specially trained radiologist will read your MRI, and the results will be sent to your doctor in the next few days. If you have questions about your MRI, please ask your technologist or any staff member.

How do I prepare for an MRI?

- You will need to remove all metal items such as a watch, hairpins, bra, jewelry, coins and piercings from your body. Please leave valuable belongings at home.
- Leave your credit cards at home because the strong magnets in the room could change the card so it will not work.
- If you wear any kind of medicine patch, such as nicotine or nitroglycerin patch, they will need to be removed for this test. Please bring a new patch to put on after your test.
- Bring a list of any medicines you take. Include prescription, over the counter, herbal, and vitamin supplements.
- We ask that you arrive 15 minutes before your appointment time. There are many questions we need to ask before your MRI. You will also be asked to fill out forms for your insurance and billing information. Please bring your insurance card(s) with you.
- We will ask you to fill out a form about your health history. Please let us know right away if you have any of the following in your body:
 - ▶ Aneurysm clips
 - ▶ Cardiac pacemaker
 - ▶ Implanted pump or stimulator
 - ▶ Metal fragments
- **Please bring any cards you may have for any implant in your body.**

- Please also let us know if you are or could be pregnant, are breastfeeding or weigh over 300 pounds.
- You will be asked to change into a hospital gown. A locker is provided for your clothes and belongings. You will need to remove dentures for some tests.
- Please **do not** bring the following into the test room:
 - ▶ Jewelry
 - ▶ Credit cards
 - ▶ Pocket knife
 - ▶ Money clip
 - ▶ Keys
 - ▶ Watch
- An IV may be started in your arm for IV medicine called contrast. IV contrast is needed to give better pictures on certain tests only.

How long will the test take?

The length of your MRI can vary, but most take between 30 to 90 minutes.

Where are the MRI facilities?

- The University Hospital MRI is on the 2nd floor of Doan Hall (410 W. 10th Avenue). The phone number is (614) 293-8181.
- The Stoneridge Imaging Center is located at 4037 West Dublin-Granville Road in Dublin. The phone number is (614) 293-0054.
- The University Hospital East MRI is located on the west side of the hospital building at 1492 East Broad Street. Follow the street signs to Outpatient Registration. The entrance is under the blue canopy.
- The Martha Morehouse Medical Plaza Pavilion (the shorter building). Check in at the front desk and MRI is located to the right just past Season's Café. The phone number is (614) 293-5700.

If you need to cancel or reschedule your test, please call (614) 293-4333.

After Your Test

If you had contrast medicine, drink 6 to 8 (8-ounce) cups of liquid to flush the contrast medicine out of your body. Good liquids for most people to drink are water, milk and juice. Limit the amount of caffeine you drink. Caffeine may be found in coffee, tea, soda, sports drinks and foods.

You may drive home after the test **if you were not given medicine to help you relax** during the test. If you were given sedative medicine to help you relax, an adult must be with you to take you home. It is not safe for you to drive or leave alone.

If you have any problems or feel something is not right after your test, call your doctor.

- **Talk to your doctor or others on your health care team if you have questions. You may request more written information from the Library for Health Information at (614) 293-3707 or email: health-info@osu.edu.**