

# Loop Electrosurgical Excision Procedure: LEEP

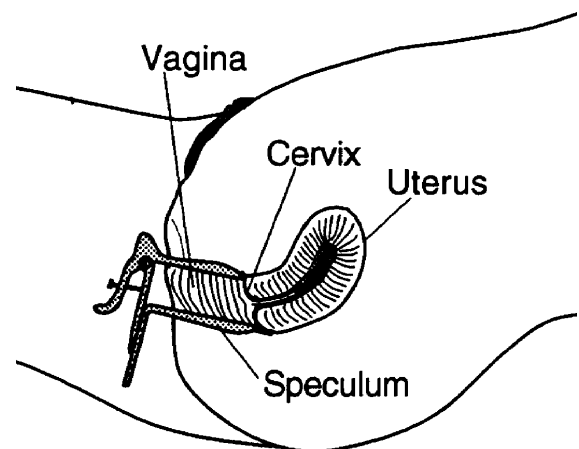
## What is a LEEP?

LEEP is the abbreviation for a **L**oop **E**lectrosurgical **E**xcision **P**rocedure. This procedure removes abnormal tissue from the cervix. The cervix is the opening to the uterus or womb.



## How Is A LEEP Done?

A speculum is put into your vagina to open it up. A local anesthetic will be used to numb the cervix. The doctor will use the LEEP machine to remove the abnormal tissue from your cervix. The total procedure takes about 15 to 20 minutes, but the biopsy takes only a few seconds. LEEP is done in the outpatient clinic.



## How do I take care of myself at home?

It will take several weeks to heal from this treatment. Do not use tampons, have intercourse or douche for 4 weeks. This will reduce your risk of bleeding from the area that is healing. You may have some mild cramping. You may also have some vaginal discharge for about two weeks. This discharge will be like having a period. The discharge will then change to be clear and watery. You should plan to rest for the next two days.

### **When do I see my doctor again?**

- Call your doctor for any of the following:
  - ▶ Excessive bleeding (soaking one pad an hour)
  - ▶ Severe abdominal cramps or pain
  - ▶ Chills or fever of 100.4 degrees or higher
  - ▶ Vaginal discharge that has an unusual odor
  - ▶ Pain not controlled by medicines like Tylenol®. Do not take aspirin.
- ▶ Return to the clinic on \_\_\_\_\_
- ▶ If you have any questions, call the clinic at 293-8047 and ask to talk to a nurse.

**If you would like more written information, please call the Library for Health Information at (614)293-3707. You can also make the request by e-mail: [health-info@osu.edu](mailto:health-info@osu.edu).**

© Copyright, (5/2005)  
Department of Nursing, James Cancer Hospital and Solove Research Institute  
The Ohio State University Medical Center

- ▶ Upon request all patient education handouts are available in other formats for people with special hearing, vision and language needs, call (614) 293-3191.